

# Overview of the ClearPoint® System

ClearPoint combines proprietary software and disposable hardware with the institutional MRI to perform brain surgery procedures under direct MRI-guidance.

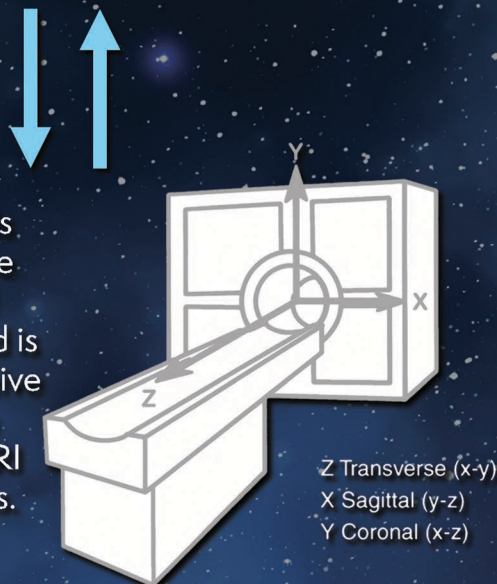


ClearPoint software is installed onto a new laptop, provided by ClearPoint, that will be used during cases and stored at the institution.

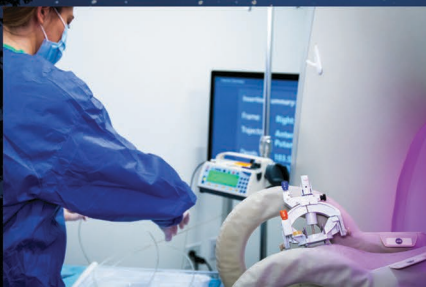
Disposable hardware is purchased in sterile packaging and stored at the institution for single use during cases.



The laptop is added to the institutional network and is able to receive information from the MRI during cases.



We offer drapes to facilitate appropriate sterility measures. MRI environment is made "surgery-ready" by confirming compatible equipment is purchased & available, and scheduling protocols are understood & communicated between departments.



Training and "mock case" are performed with an onsite ClearPoint clinical specialist. A clinical specialist will also attend every procedure.

ClearPoint is now ready to go live at the institution. Cases proceed regularly and can include:



1. Neurostimulation/DBS for Parkinson's disease & tremor.
2. Brain biopsy and laser treatment of brain tumors.
3. Laser treatment of seizures (epilepsy).
4. Investigational drug or stem cell delivery for brain diseases.



# Key Departments for ClearPoint Installation

In addition to the surgeon(s) who is interested in using the ClearPoint system, there are five entities that are critical for its initial and long-term success, shown below. The roles of each department are outlined in the remaining sections along with key questions that need to be addressed prior to finalizing ClearPoint's installation. The information that the institution provides ClearPoint during this process will help us ensure our technology helps the institution reach its long-term goals.

